

State of Wyoming Corner Record

(In compliance with the **CORNER PERPETUATION AND FILING ACT**, Wyoming Statutes, 1977 Section 36-11-101, et. seq., and the Rules and Regulations of the Board of Professional Engineers and Professional Land Surveyors)

Reverse side of this form may be used if more space is needed.

Record of original survey and citation of source of historical information (if corner is lost or obliterated). Description of corner monumentation evidence found and/or monument and accessories established to perpetuate the location of this corner. Sketch of relative location of monument, accessories, and reference points with course and distance to adjacent corner(s) (if determined in this survey). Method and rationale for reestablishment of lost or obliterated corner.

FOUND: No monument found at the corner (corner falls in paved approach to State Highway 217).
Corner position re-established from corner form, 1977, by R. L. Hudson, LS 519.

GLO RECORD: Set Limestone 16 x 12 x 5 for corner to Sec. 34, 35, 2 & 3.

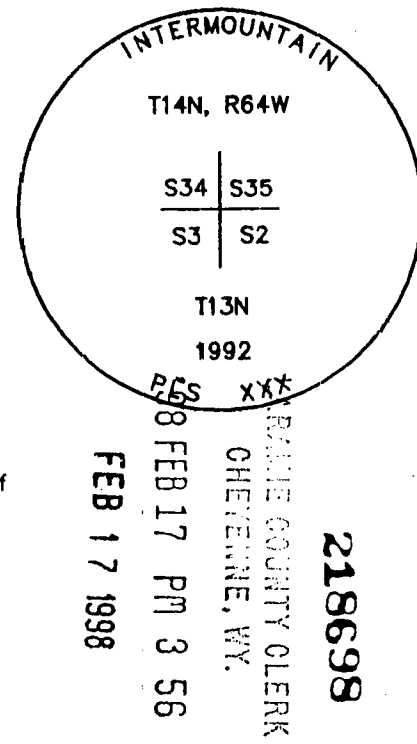
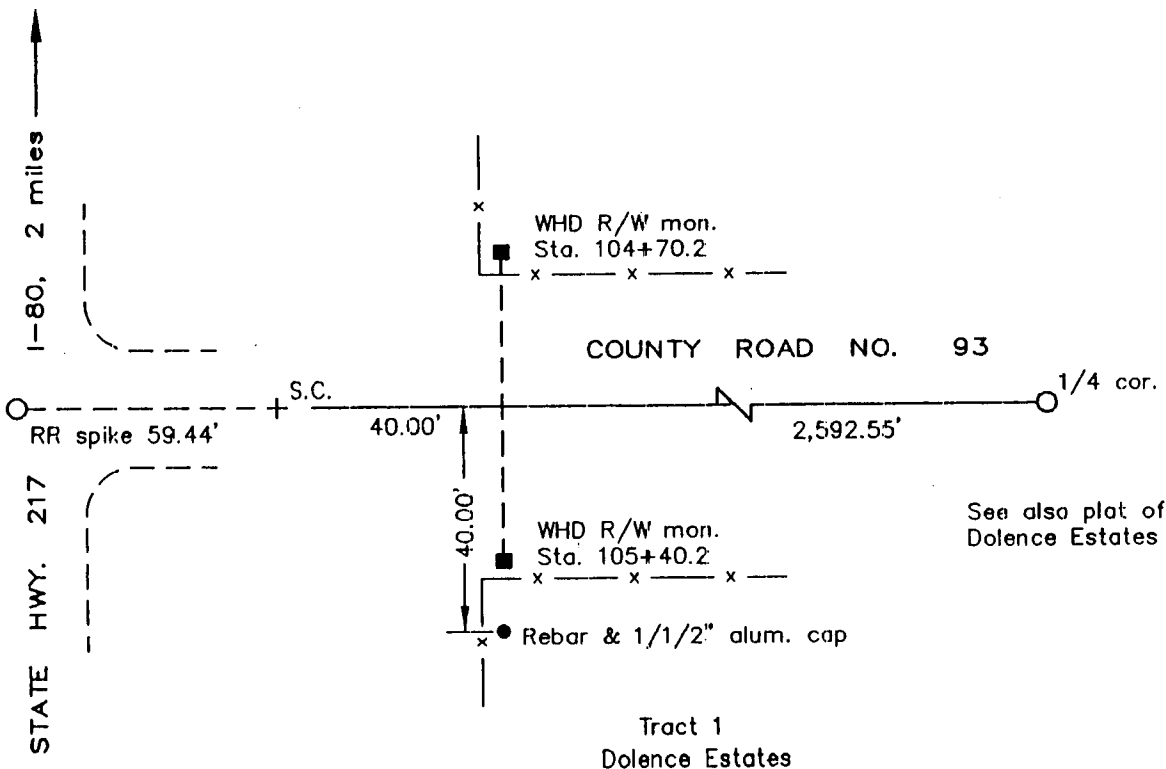
SET: Set 3-1/4" aluminum cap on driveable post.

REFERENCES: Found railroad spike, origin unknown, bears S 89°53'52" W, 59.44 feet distant.
Found Wyoming Highway Department R/W monuments as shown on Hudson corner form.



Reference Locations

Monument Inscription



See also plat of Dolence Estates

Date of Field Work: 1/31/92

Office Reference: 2351

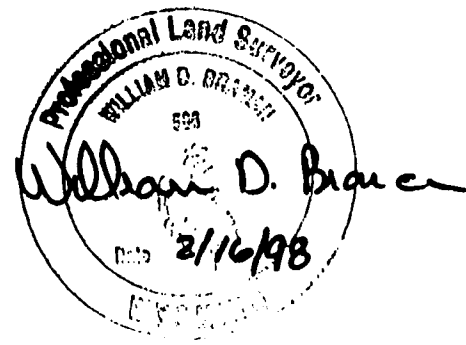
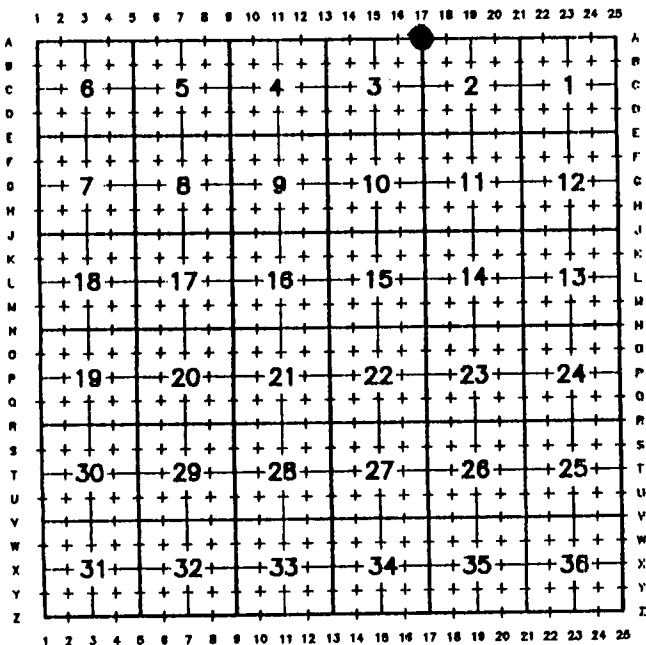
Cross Index Plat

Firm/Agency, Address

This corner record was prepared by me or under my direction and supervision.

INTERMOUNTAIN PROFESSIONAL SERVICES
5801 OSAGE AVENUE
CHEYENNE, WYOMING 82009
Ph: (307) 632-3138
Fax: (307) 632-3194

SEAL & SIGNATURE



Corner Name Sec. Corner 34 | 35 T 14 N, R 64 W, 6th P.M.
3 | 2 T 13 N, R 64 W, 6th P.M.

A-17 T13N R64W
Cross-Index No.: Z-17 T14N R64W

BOOK **1472**

County: Laramie, Wyoming

1571